



# Makawao Hongwanji Buddhist Temple

May 2024

P.O. Box 188, Makawao, Maui, HI 96768

Office Phone: (808) 572-7229

E-mail: [makawaohongwanji@gmail.com](mailto:makawaohongwanji@gmail.com) Website: [makawaohongwanji.org](http://makawaohongwanji.org) Resident Minister: Rev. Kerry Kiyohara

MAKAWAO HONGWANJI MISSION  
P. O. BOX 188  
Makawao, HI.—96768

Return Service Requested

Non-Profit Organization  
U.S. Postage  
PAID  
PERMIT NO. 6  
Makawao, HI 96768



## SUNDAY SERVICES ARE IN-PERSON AND LIVESTREAMED

Sunday, May 5, 9:00 a.m.  
OHANA SUNDAY FAMILY DHARMA SERVICE  
MONTHLY MEMORIAL SERVICE  
CHILDREN DHARMA SCHOOL

Sunday, May 12, 9:00 a.m.  
SUNDAY FAMILY DHARMA SERVICE

Sunday, May 26, 9:00 a.m.  
SUNDAY FAMILY DHARMA SERVICE

Sunday, May 19, 9:00 a.m.  
*FUJIMATSURI at MAKAWAO  
HONGWANJI BUDDHIST CHURCH*

## *FUJIMATSURI - May 19*

The birth of Shinran Shonin, founder of Jodo Shinshu, coined the term “Jodo Shinshu” meaning, “True Teaching of the Pure Land.”

We will have a special service, followed by games, corn-hole competition, lunch and fellowship. In addition, we will learn a new O-bon dance for 2024. R.S.V.P required for lunch, 572-7229.



## Finding Amida: Everything, Everywhere, All at Once!

"Saying the Name is in itself mindfulness; mindfulness is the *nembutsu*; the *nembutsu* is *Namu-amida-butsu*."

—Shinran Shōnin (1173-1263)

Founder of Jodo Shin Buddhism

Passages on the Pure Land Way, Collected Works of Shinran, Vol. 1, p. 296

This quote is the conclusion to an essay written by Shinran-*shōnin*, the founder of *Jōdo Shinshū* buddhism in the Hongwanji tradition, and worthy of deep study and reflection if one wishes to truly understand Shinran's teachings as the essence of the Pure Land Way. Simply put: "Saying the Name" = mindfulness = the *nembutsu* = *Namu-amida-butsu*.

ねんぶつ  
「念仏」

「念仏」 *nembutsu* is written "*nenzuru*" to be mindful of, to meditate on + "*butsu*" buddha = mindfulness of Amida.

The first character, "*nen(zuru)*", is a wonderful *kanji* using two component parts, "now" 「今」 and "*kokoro*" (heart-mind)

「心」 = mind-heart is "now" "being mindful"!

In other words, *Nembutsu* means your "*kokoro*" heart-mind is always mindful of Amida. You are brought to find, to see, to discover aspects of Amida in every moment of each day of your unrepeatable life.

Perhaps the easiest way to understand *Nembutsu* is just share the joy in Tori's face at her rare and wonderful encounter with a Jackson's Chameleon who greeted her in *gasshō*, AND her natural unprompted response in gratitude with her own *gasshō* and beaming smile.



Then consider the reality-as-it-is that Sean caught this incredible *Nembutsu* moment on camera and shared it with us. And mahalo nui loa to Tori Higuchi for giving her permission to publish this photo, which is true and real, just as it is, no digital manipulation.

What a wonderful discovery that is being shared with us: Amida can be found in all aspects of our lives. Everywhere. In Everything. All at Once.

In the modern world, everyone is busy, juggling too many roles and responsibilities, with no time to study and reflect upon the Dharma teachings. The winds of impermanence continue to blow and we must adapt, improvise, and overcome the challenges of life in the real world. Where do we find the strength and serenity to keep moving forward? In this realm of *samsara* human confusion and delusion, it is all too easy to give up hope, be cynical, and feel alone.

And yet...as Tori and the Chameleon show us, the *Nembutsu* comes to us in each moment, when we live each moment in the *Nembutsu*, this inconceivable chain of moments join to create your unrepeatable life! *NamōAmidaButsu!*

The sense of wonder that comes with experiencing the world as a series of *Nembutsu* moments is still in our hearts.

Continues on Page 3

*Continued From Page 2, Minister's Message*

Just take a deep breath and say *NamoAmidaButsu!* in mindfulness that you, just as you are, utterly human, are embraced by Great Love and Great Compassion, Amida, the buddha for you!

Experience *NamoAmidaButsu!* in joy and gratitude for this moment of this day of your unrepeatable life.

May your day be filled with Aloha!

NamoAmidaButsu!

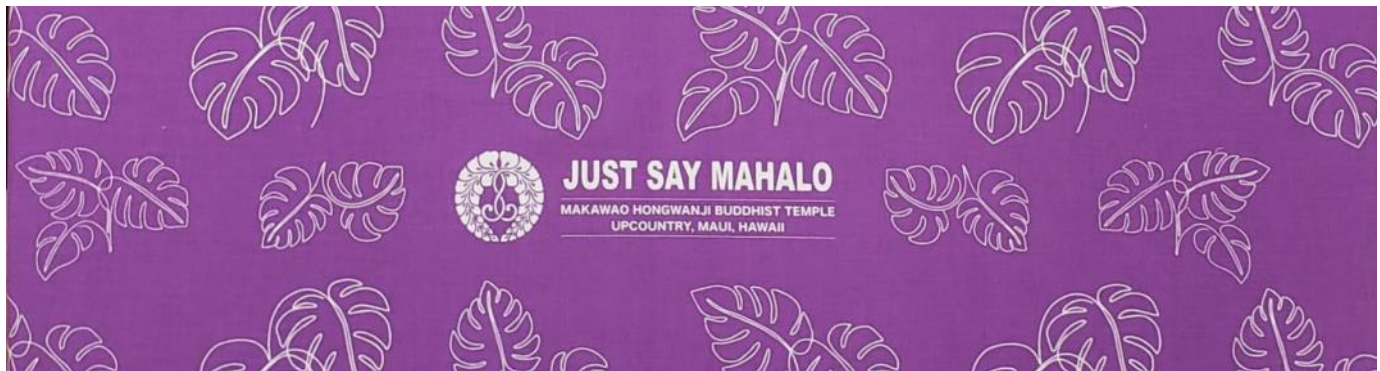
***Rev. Kerry***

P.S. Nembutsu Trivia #17: *Namu Amida Butsu* and *Namo Amida Butsu* are written using different *kanji* characters but essentially interchangeable. Current preferred usage in Jōdo ShinshūHongwanji tradition is “Namo” Amida Butsu.

# LET'S DANCE!!

## Bon Dance July 26-27, 2024

Bon Dance Practice - Tuesday June 4 and June 25 at 6:00 p.m. in the Social Hall.



## Golden Chain of Love

**I am a link in Amida Buddha's Golden Chain of Love that stretches around the world  
I must keep my link bright and strong.**

**I will try to be kind and gentle to every living thing and  
protect all who are weaker than myself.**

**I will try to think pure and beautiful thoughts, to say pure and beautiful words,  
and to do pure and beautiful deeds, knowing that on what I do now  
depends not only my happiness or unhappiness but also that of others.**

**May every link in Amida's Golden Chain of Love be bright and strong  
and may we all attain perfect peace.**

**Namo Amida Butsu**

## Be Better Than You Were Before



Today as I sat in the pew waiting for the service to begin, I had a different kind of feeling. I felt a little calmer, more relaxed than usual and comfortable. I took the time to appreciate my surrounding and was grateful to have a place to hear the Dharma teachings.

Looking around the temple, I saw familiar faces whom I missed. We greeted five new people who were visiting Maui and one from Kula. Please know that we are full of happiness when we greet returning friends as well as new ones. It is always encouraging to chat with, laugh with and exchange smiles with others. I like the social part of attending Sunday services. I embrace this action.

This Sunday was extra special. Many knew we were having a guest speaker. Her name, Rev. Charlene Kihara came from Honpa Hongwanji. We were fortunate to have her come to talk about and address the significance of *Eshini-ni* and *Kakashin-ni* whom we honor. I'm glad many attended the service to hear her message. Rev. Kerry will probably give you the details so I won't say anything more.

Perhaps having a special service as we did, encouraged temple friends to be present. It felt good to see adults as well as Dharma School students listening to the children's story. The buzz in the temple captured Dharma School students' attention.

Why am I telling you this? Thinking about today, I know life is filled with choices that affect or will affect any situation you are in. The action taken can go one of two ways. One choice can be hurtful, closed-minded and inward in thought and action. Or, it can be open and thoughtful to embrace the moment. It is sometimes difficult to choose. However, that is what life is about, making choices. No one can follow 100% of Buddha's teachings. Whatever is chosen, the opportunity is there and a choice will be made.

We make choices daily and we alone are responsible for all actions.

It would take many **Namo Amida Butsu** moments to be

Kind, Grateful, Appreciative and Compassionate. However, we try.

After all, we are human beings.

May your day be filled with smiles, laughter and kindness,

**Karen**

### SENIOR PROGRAM

By: Alison

The Makawao Seniors were busy as bees in April. We made price tags for the furniture and garage sale gangs. Hopefully we have hundreds of tags ready to go in June. We all enjoyed a great lunch and talk story after all our hard work. There were a lot of stories and laughter coming from the Dana House. Come join us in May!

We will be enjoying a BWA New Years Luncheon at the end of April. Hooray! We're finally able to enjoy a luncheon celebrating the year 2024 before the chaos of the summer months hits us. PARTY!

## May & June 2024 Memorial Anniversaries

(Please call Temple Office to schedule your service—572-7229)

### 1st Year Memorial Service 2023

May 14 Aiko Makimoto  
May 31 Susumu Takemoto  
May 31 Helen Sumie Kagehiro

### 1st Year Memorial service 2023

June 25 Warren Terumi Nishida

### 3rd Year Memorial Service 2022

May 05 Mitsuko Matsui  
May 13 Megumi Takemoto

### 3rd Year Memorial Service 2022

June 25 Kaori Mizomi

### 7th Year Memorial Service 2018

May 26 Hideo Tanimoto

### 7th Year Memorial Service 2018

June - None

### 13th Year Memorial Service 2012

May - None

### 13th Year Memorial Service 2012

June - None

### 17th Year Memorial Service 2008

May - None

### 17th Year Memorial Service 2008

June - None

### 25th Year Memorial Service 2000

May 21 Itsuo Shiraki

### 25th Year Memorial Service 2000

June 13 Asayo Yamashita  
June 25 Shigeru Hanada

### 33rd Year Memorial Service 1992

May - None

### 33rd Year Memorial Service 1992

June 24 Shigeaki John Mimura  
June 26 Sadako Josephine Yamashiro

### 50th Year Memorial Service 1975

May 22 Masazo Okamura  
May 28 Shigeo Dobashi

### 50th Year Memorial Service 1975

June - None



***Donations*** - Makawao Hongwanji Mission can operate only because of the generous donations from many, many people. All donations are humbly received with sincere gratitude and appreciation. IF YOU DO NOT WISH TO HAVE YOUR DONATION PRINTED IN THE NEWSLETTER, OR IF YOU WISH TO HAVE YOUR DONATION LISTED AS ANONYMOUS, PLEASE INDICATE SO BY ATTACHING A NOTE TO YOUR CONTRIBUTION. *Thank You!*

**Contributions March 27, 2024 to April 26, 2024**

**DONATION:**

Joann Yosemite

Christine Kubo

Rohan de Silva

Mr. and Mrs. Burton Onikama

In memory of Lester and Clara Hamai (Ohigan) – Clyde and Gail Hamai

In memory of Doris Nakamoto and James Nakamoto – Harriet Kitazawa

In memory of Daniel Watanabe (7<sup>th</sup> year memorial) – Cathlyn Watanabe

In memory of Florence Sakae and Hanako Hashimoto – Glenn and Katherine Hamai

In memory of Yasuro Tamashiro – Burton Onikama

In memory of the Takishita family – Lynn Tanoue

In memory of Ralph Katsuji Sakamura – Sakamura Ohana

In memory of the Kunimitsu family – Susan Nagata Bottani

In memory of Helen and Edwin Kagehiro, Megumi and Susumu Takemoto, Aiko and

Nadao Makimoto, Joe Takahashi – Robert and Iwa Yoshioka

In memory of Florence and Sho Sakae – Sakae family

In memory of Caren Gohara – Cary and Calvin Hayashi

In memory of Michiko Tanaka – Hiromi and Jo-Anne Tanaka, Mark Tanaka

Upcountry Flyer - Anonymous

**NOKOTSUDO:**

Margaret Honda

Sidney and Diane Nako

Neil and Mona Nakamura

Mae Balmores

Ronald and Rena Matsunaga

Haruye and Neil Shirokane

In memory of Grace Kijima – Mark Kijima

In memory of Chester and Shirley Kawahara – Kelvin and Lynn Nakamura

In memory of Tadashi and Yoshie Fukushima – George and Alice Fukushima

In memory of Isamu Kajita - Anonymous

# gratitude

# MAKAWAO HONGWANJI TEMPLE COUNCIL MEETING HIGHLIGHTS FROM THE MINUTES

Sunday, April 14, 2024



## Minister's Report:

- Lanai Hongwanji working on converting the Minister's Residence and part of the temple building into an elder care facility.
- BSA Metta and Sangha Awards program will have open house sometime soon to explain the programs and their requirements
- Japanese School has over 30 students.

**Upcountry Event Guide 2024:** Ad spaces will appear in the Upcountry Event Guide for Summer Garage Sale, July Obon, and Winter Garage Sale.

**New Bon Dance Towels for 2024:** Shipment has been received.

**New Bon Dance From BCA:** For their 125th Anniversary this year, the Buddhist Churches of American commissioned a new Bon dance song "Lantern Song" and a dance to go with it. The new song and dance can be viewed on YouTube. Diane and Bobbi suggested to incorporate the dance into our Obon.

**YESS Camp 2024:** Karen Ishizu announced the camp will be held in-person for the first time in 5 years on the last weekend of May. The organization is looking for friends and temples to support the event by running paid advertisement in their booklet. Council approved to run an ad. Panda Express Fundraiser will be on May 3 to benefit YESS Camp. Use fundraiser Code number 922500.

**Fujimatsuri:** Maui Hongwanji temples are invited to Fujimatsuri to be hosted by Makawao Hongwanji on May 19 from 9 a.m. There will be short service, followed by games/activities and lunch.

**Membership:** Report submitted.

**Funeral/Columbarium:** Report submitted.

**Properties:** Bobbi will receive monthly reports from property manager of rental units.

**Repairs and Maintenance:** Report submitted.

**Scouts:** BSA Troop 180 (girls) is working on making 100 one-gallon jars of peaches, prices to be announced. The remaining pickled peaches will be prepared in 5-gallon sizes to be sold to various stores.

**Dharma School:** Sharon Nagoshi reported on their field trip on June 5-7.

**Judo Club:** The statewide tournament will be hosted by Makawao Hongwanji in September.

**Preschool:** Preschool recently visited the Hui No'eau.

**Japanese School:** Spring semester has 39 students: 5 in children's beginner class, 16 in adult beginner class, 18 in adult intermediate class. End of semester is on May 11.

**Triple Celebration In September 7-8 at Ala Moana Hotel:** Extended deadline April 30. See the website for more details <http://hongwanjihawaii.com/triple-celebration/>

*(Full text of Council Meeting and reports can be obtained from the Temple Office.)*

# NAMO AMIDA BUTSU

## BWA Annual Luncheon

By: Carol

On Saturday, April 17, 14 BWA ladies and Rev. Kerry waited eagerly for the MEO bus ride to Maalaea. We all gathered at Tante's Restaurant for our annual luncheon, joined by other BWA members that drove their own cars. Karen had us playing "jan ken po" for prizes. Then she had us enjoy samples of special peppermint and chocolate fudges. It was indeed a yummy experience.

Right after Rev. Kerry led us in aspirations and words of thanksgiving, everyone was very excited because lunch was served! We partook in salmon, ribs, and island mixed plate. Needless to say, there was no talking for about 30 minutes while we filled out tummies. Like everything else, our luncheon was soon over and everyone boarded the bus to go back to Makawao.

What a memorable day it was! We shared stories, photos of our families, and some of us even went home with prizes.



### SHARING YOUR NEMBUTSU MOMENTS

What is your WOW moment? Write just 1 paragraph or up to 500 words about a WOW moment when you thought "It's Buddhism, what I learned about in church!!". (Interdependence, cause and effect, golden chain, sangha ohana, compassion, gratitude, etc. etc.).

Please share your experiences by August 31, 2024, at the site on the flyer. Nembutsu Moments will be shared in the Honpa newsletter and compiled into a book. Contact Marilyn for more information at (808) 572-7445. See flyer on page 15.



## SAVE THE DATE!

### Summer Garage & Bazaar to be held in June!

Our annual Summer Garage Sale/Bazaar will be held on **Saturday, June 22** and **Sunday, June 23**. The annual bazaar will also be held on **Sunday, June 23 only**.

You **won't** want to **miss out on** all the great stuff **that's** going to be for sale. We are already gathering many wonderful household items, tons of clothing, yukatas for obon, antiques and curios, books, toys, beautiful plants, furniture, crafts and much, much more! On Sunday, June 23, the Bazaar items will include Makawao Hongwanji's famous Chow Fun, jams & jellies, sushi, baked **goodies** and miscellaneous home-grown products.

We are gratefully accepting donations for the garage sale. We realize that the success of our garage sales has always depended so much on the generosity of our supporters. Thank you all very, very much! We also would like to ask that donations still be in good working order, well maintained, and gently used, such as with linens, blankets & clothing. Again, your donations are greatly appreciated. However, please note that we cannot accept certain items. **Please check with the office before dropping off large items (808) 572-7229.**



### WE ASK THAT YOU PLEASE **DO NOT** DROP OFF THE FOLLOWING:

- ⇒ **Baby strollers, cribs, play pens, car seats (Subject to Safety Laws & Liability)**
- ⇒ **Large home exercise equipment**
- ⇒ **Sofas**
- ⇒ **Beds, Mattresses, Bed Frames**
- ⇒ **Large TV's (Over 25")**
- ⇒ **Lawn mowers, vacuum cleaners**
- ⇒ **Computers/Printers**
- ⇒ **Flammable items (gas canisters, old paints, paint thinners, household cleaners, etc.)**
- ⇒ **Large heavy furniture**
- ⇒ **Metal Filing Cabinets**
- ⇒ **Broken and/or dirty items**



## TROOP 18 NEWS - By Wesley Kosaka

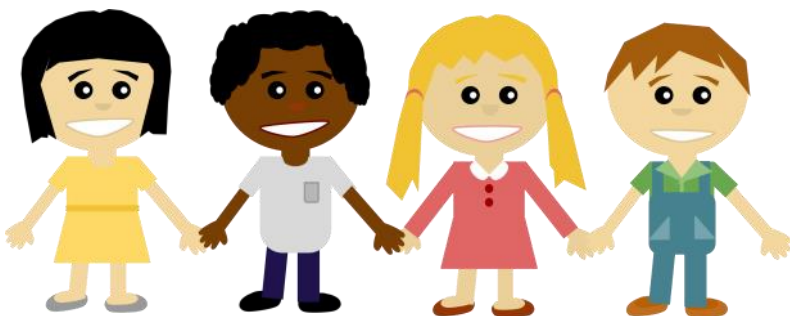
Troop 18 had an exceptional April filled with achievements and meaningful experiences. The main event this month was undoubtedly our success at the Camporee, where our efforts earned us the Standard Award. Through hard work in preparation and solid teamwork, our Scouts showcased their skills, with both patrols scoring high in all competitions. We also scored high in the individual events, earning 2nd place in the Hot Spark and 1st, 2nd, and 3rd in the Individual Knot Tying Relay. Additionally, our troop volunteered at the King K Color Run, directing runners to their destinations. Lastly, our Scouts explored the wonders of the cosmos through the Astronomy Merit Badge, expanding their knowledge and climbing further on the path of Eagle Scout.



**YESS Camp Fundraiser - To support YESS Camp, please order online from Panda Express on May 3 and enter the code 922500 in the fundraiser code box at checkout.**

## MAKAWAO HONGWANJI PRESCHOOL GOES TO HUI NO'EAU

Makawao Hongwanji Preschool went on a field trip to Hui No'eau Visual Arts Center in Makawao. What a wonder day it was! The children were treated to a puppet show with the fishes and ocean floor that they painted, games on the vast lawns, and introduction to the various grand trees on the grounds. The icing on the cake was the bus ride. For some of the children, this was their first experience riding on a school bus that they have only seen on the road. Thank you to the staff of Hui No'eau for a day the children will remember for a long time.



## Aloha from the Membership Committee

**This is a friendly reminder to pay your membership dues (in full or in part) by Sept. 7, 2024 or sooner. Membership dues are \$300/year or \$25/month.**

**Mahalo** if you have already paid.

(P.S. You are not officially a \*sustaining member [dues-paying] until dues are paid in full or in part.)

### **\*Sustaining Membership Benefits**

As Jodo Shinshu Buddhists, our greatest benefit is the gift of the Teachings (Dharma) and the opportunity to live a life of Nembutsu, peace, compassion, and gratitude. Additionally, as a Sustaining Member, these other benefits are available to you:

- Immediate access to ministerial services
- Voting rights at general membership meetings
- Opportunity to be a part of administrative management
- Monthly newsletter
- Honpa Hongwanji Mission calendar (*please request calendar on Update Form*)
- Priority enrollment of your child at Makawao Hongwanji Preschool (*member at least 2 years*)
- Use of facilities
- Discounted fees for temple services and ceremonies
- Opportunity to reserve a niche in the columbarium



## DHARMA SCHOOL

Dharma school celebrated Buddha's birthday by making baby Buddha cards decorated with flowers.



## Eshin-ni and Kakushin-ni Special Service Guest Speaker Rev. Charlene Kihara by Jean Heselden

We were honored to have as our guest speaker on April 28, Rev. Charlene “Char” Kihara, an associate minister serving the Honpa Hongwanji Hawaii Betsuin in Honolulu. In her Dharma Talk, Rev. Char focused on the role of three remarkable women in the Hongwanji tradition who continue to influence and inspire us today.

Rev. Char explained the significance of the work of Eshin-ni, wife of Shinran-shōnin, and Kakushin-ni their youngest daughter, who created the foundation of our Hongwanji tradition 800 years ago. In her slide show, Rev. Char shared a picture of herself at the burial site of Eshin-ni in the ancient Province of Echigo which is now part of Niigata Prefecture on the northwest coast of Japan.

Describing the work of an outstanding leader in modern times, Rev. Char recounted the life of Lady Takeko Kujō, daughter of the 21<sup>st</sup> Monshu Ōtani Kōson. Lady Kujō co-founded the Buddhist Women’s Association in 1904-05, founded the Kyoto Women’s College in 1920, and established the modern Asoka Hospital in Tokyo shortly after the devastating Kanto Earthquake of 1923. Also a renowned poet, Lady Kujō wrote the poem which became the lyrics of the gatha *Splendor of an Evening Sky*. Lady Kujō was a social activist who overcame the severe limitations of gender discrimination in her era.

We extend our warmest **Mahalo** to Rev. Char for enlightening us about the lives these three great women leaders of the Hongwanji tradition.



Guest Speaker Rev. Charlene Kihara.  
Above her on the big screen is a photo of  
Rev. Char at the burial site of Eshinni-ni in  
current Niigata Prefecture.



Rev. Kerry and Mrs. Mimy Kiyohara with Rev. Charlene Kihara.  
Rev. Char and Rev. Kerry were Tokudo ordination  
classmates in Kyoto in 2016.

**HEADQUARTERS UPDATE**

1727 Pali Highway, Honolulu, Hawaii 96813  
Phone: (808) 522-9200 Fax: (808) 522-9209

**MESSAGE FROM THE BISHOP**

**April 2024**

Eight months have passed since the Maui Wildfire devastated many houses and buildings and displaced thousands of people. We would like to express our appreciation to the ministers, members, and many people from within and outside the Hongwanji Community for your heartwarming words and compassionate actions for those affected by the Maui Wildfire. We would like to provide some updated reports of our emergency responses and recovery actions as Hawaii Kyodan.



As of March 29, 2024, HHMH has received \$872,292.86 in cash/check donations. Through the Committee on Social Concerns, we have processed omimai for each member of Lahaina Hongwanji and other individuals of our Hawaii Kyodan Ohana who have been impacted by the wildfires. We have also donated to various non-profit organizations to support their emergency relief efforts. As the needs of the Lahaina Hongwanji Mission, its members, and the West Maui community arise, we will continue to provide support to facilitate the healing process. We are also assessing the significant funding requirements to reestablish the Temple as an integral part of the Lahaina community.

Many temples and individuals in Japan have extended their support directly to HHMH or through Honzan's fundraising campaign. The Jodo Shinshu Hongwanji-ha, our headquarters in Kyoto, and its affiliated organizations have also contributed over \$240,000. Bishop Umitani attended the Shukai (Legislative Assembly) at Honzan on February 29, 2024, to make a presentation on the Maui Wildfires and officially express our appreciation for their ongoing support.

FEMA's site visit to Lahaina Hongwanji was held on March 11 and 12, 2024. The purpose of the visit was to enable FEMA to develop an estimate of reconstruction costs for lost structures. During the inspection, our team also met with FEMA Hazard Mitigation, Historical Preservation, & HIEMA. Rev. Hironaka, Derrick Inouye, Gary Murai, and several Lahaina Hongwanji Members represented the HHMH. The Maui County Right of Entry has been approved and the date for the Corps of Engineers to handle the debris cleanup has not yet been set.

As the scope of the Maui Wildfire Emergency Response Ad-Hoc Committee has shifted from emergency response to recovery/rebuilding, the Committee was disbanded on April 1, 2024, and the Lahaina Hongwanji Recovery and Rebuilding Committee was newly organized, chaired by Michael Munekiyo. The new Committee will focus on recovery-related coordination requirements with FEMA, the Corps of Engineers, and other State and County agencies. As well, the Committee will support the Lahaina Hongwanji Sangha in the various planning processes associated with the Temple reestablishment goal.

As fellow travelers of the Nembutsu, may we continue to stand in solidarity with those experiencing suffering and sorrow caused by this unprecedented disaster.

In Gassho,

**Rev. Toshiyuki Umitani, Bishop**

**Derrick Inouye, Business Manager**

**Michael Munekiyo, Chair of the Lahaina Hongwanji Recovery and Rebuilding Committee**

Commission on Buddhist Education &  
the Buddhist Study Center Committee



# Sharing Your NEMBUTSU MOMENTS

2024 HONGWANJI SLOGAN

*"Sharing Nembutsu Moments"*

## WHAT IS A "NEMBUTSU MOMENT?"

When you see or hear or experience something so beautiful, touching and profound that it leaves you speechless and all you can say is "Wow!" After that, as one continues to be in awe of that life changing encounter, you continue to say "Wow." This moment is explained in *The Collected Works of Shinran, Volume Two* as "...the moment of awakening of shinjin (True Entrusting) and saying the nembutsu is a moment both in and out of time.

--- Reverend Eric Matsumoto

WE WILL SHARE YOUR EXPERIENCES  
IN THE KA LEO KAHEA, TEMPLE  
NEWSLETTERS OR IN A COLLECTION  
FOR A BOOK.

## SUBMIT YOUR EXPERIENCE HERE!

<https://forms.gle/6cVKBwqszqYg5XrHA>



**DEADLINE TO SUBMIT:  
AUGUST 31, 2024**

## ??? QUESTIONS ???

Please contact Debbie Kubota  
[dekub88@gmail.com](mailto:dekub88@gmail.com)

# May 2024

Sun-	Mon	Tue	Wed	Thu	Fri	Sat
			1	2 6:00 pm ~ 8:45 pm Judo	3	4 9:00 am ~ Japanese School
5 9:00 am First Sunday Family Service & Dharma School	6 7:30 am ~ 11:30 am Tutu and Me 6:00 pm ~ 8:45 pm Judo	7	8 7:30 am ~ 11:30 am Tutu and Me 10:00 am Monthly Service Hale Makua "Kahului"	9 9:30 am~12:30 pm Senior Program 6:00 pm ~ 8:45 pm Judo	10	11 9:00 am ~ Japanese School *End of semester Party
12 9:00 am Family Service	13 7:30 am ~ 11:30 am Tutu and Me 6:00 pm ~ 8:45 pm Judo	14	15 7:30 am ~ 11:30 am Tutu and Me	16 6:00 pm ~ 8:45 pm Judo	17	18 10:00 am MUBWA Maui Matsuri *Queen Kaahumanu Center
19 9:00 am Fujimatsuri (MHBT)	20 7:30 am ~ 11:30 am Tutu and Me 6:00 pm ~ 8:45 pm Judo	21	22 7:30 am ~ 11:30 am Tutu and Me	23 6:00 pm ~ 8:45 pm Judo	24	25
26 9:00 am Family Service	27 7:30 am ~ 11:30 am Tutu and Me 6:00 pm ~ 8:45 pm Judo	28	29 7:30 am ~ 11:30 am Tutu and Me	30 6:00 pm ~ 8:45 pm Judo	31	

